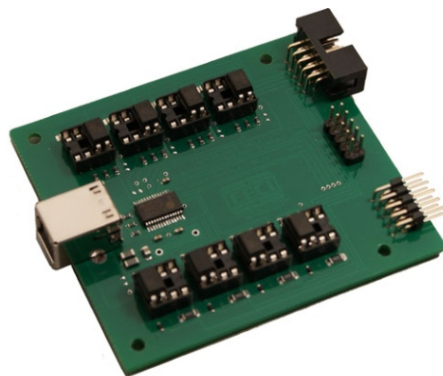


AR-8MF MULTI-FUNCTION RELAY INTERFACE

TECHNICAL REFERENCE



Click for more info: www.eeci.com/ar-8mfp.htm

PHONE..... (937) 349-6000
 ORDERS..... (800) 842-7714
 TECH SUPPORT... (937) 349-6000
 E-mail..... sales@eeci.com

www.eeci.com
Click for Website

TABLE OF CONTENTS

Specifications, Description and Technical Support.....	page 1
Connection Diagram.....	page 2
Set-Up & Testing.....	page 3 & 4
Trouble-Shooting.....	page 5
Setting Input/Relay Modes and Opto Isolators.....	page 5 & 6
Optional Dual I/O Mode.....	page 6
The AR-8MF User Interface and Data Logger.....	page 7 & 9
Control Software and Programming Examples.....	page 8, 9 & 10
Setting Auto Start-Up and Mounting.....	page 8 & 11
Connection to Existing Relays & Connector Pin-outs..	page 12
RD-8, RH-8 and RCT-8 Cards.....	page 13
RYD-8 Relay Driver	page 14 & 15
Warranty and Setup.....	page 15 & 16

SPECIFICATIONS

Power Supply.....	5VDC (powered from USB port)
Serial Data Protocol.....	75 to 6,000,000 baud - auto detect (defaults to 115,200 baud) (data bits, parity, stop bits will auto detect)
Channels.....	8 relays/outputs or 8 inputs (or combinations)
Input Voltage Range.....	3.3 volts up to 18 volts (default) other voltage ranges available Minimum 1.5ma needed to turn input on (DC or AC)
Output Signal.....	Photo transistor, maximum 100mW draw (20ma at 5V) switching voltage range 3.3 VDC to 48 VDC
Expansion Capability.....	expandable to control up to 144 relays/inputs (or combinations) using EXM-8, EXM-16 or EXM-32 Relay I/O Expansion Modules
Interface.....	USB (also available in WiFi version (AR-8MFWIFI), Ethernet version (AR-8MFENET) RS-232 version (AR-8MF232) or RS-485 version (AR-8MF485))
Weight.....	1.25 ounces
Size.....	2.75 inches by 3.1 inches
Options Available.....	Dual I/O Port

DESCRIPTION

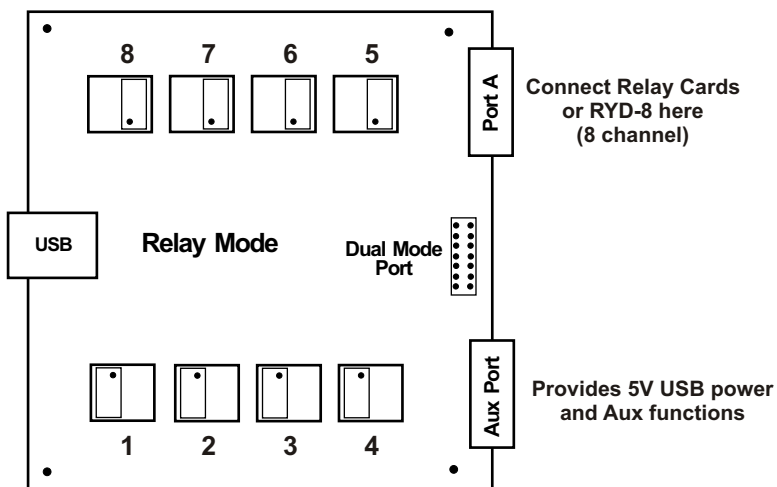
The AR-8MF provides software control of 8 relays/outputs or monitoring of 8 inputs (or combinations of inputs and outputs). An optional dual I/O mode will allow input of information along with relay control. The input mode will provide input interfacing for on/off equipment status, keypads or other types of digital signals. Inputs may be used to monitor contact status or to monitor AC or DC voltages (+) or (-) 3.3 volts to 18 volts (other voltage ranges available). The optically isolated inputs are bidirectional and may be used with a positive common, a negative common or AC signals. Multi-Function capability allows connection of a variety of 8 bit I/O devices. A large variety of relay cards may be connected.

24 HOUR TECHNICAL SUPPORT

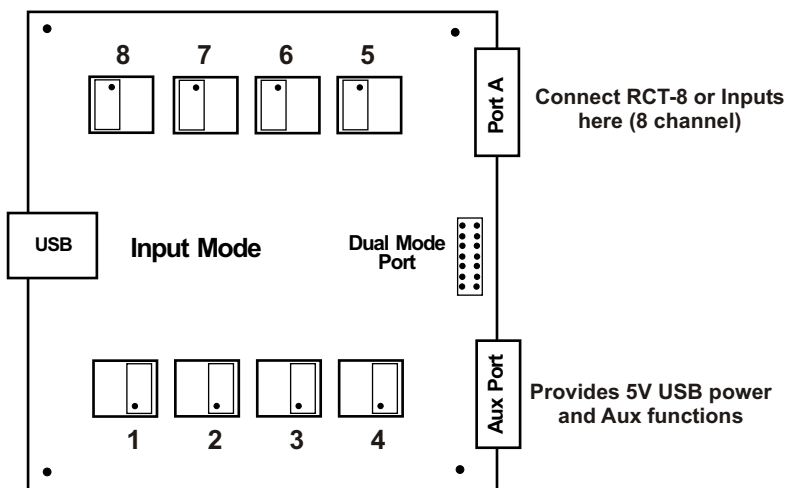
Technical support for our products is available by calling (937) 349-6000. If a technical adviser is not available, please leave your name, phone number and a time that you can be reached. Your call will be returned as soon as possible and within 8 hours. Calls received during normal business hours are usually returned within minutes.

CONNECTION DIAGRAM

**AR - 8 MF
MULTI-FUNCTION
RELAY INTERFACE**



The opto isolator positions above are shown in their default position (all set for relay mode)



The opto isolator positions above are all shown in input mode

IMPORTANT: Always discharge any static electricity from your body by touching the bare metal on the back of your computer before handling your AR-8MF Interface card or attached USB cable.

SET-UP AND TESTING

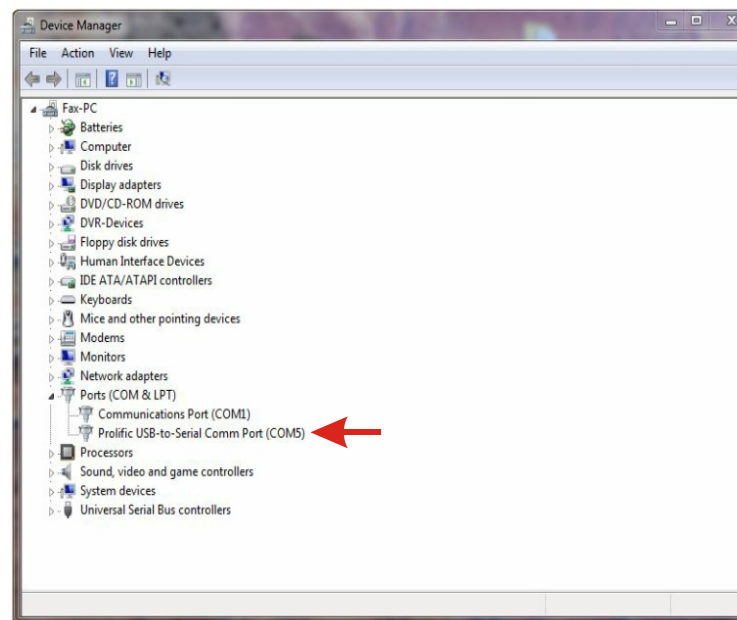
Upon receiving your AR-8MF, you should connect and test the operation of the hardware to verify proper operation. Please set-up and test the AR-8MF as follows (Windows XP*, Vista, Windows Server, Windows 7, 8.1, Windows 10 or Windows 11)
 *service pack 3

(Step 1) Connect to the Internet. This permits any security or software updates to occur during installation. If you do not have an Internet connection, you may skip this step (please note that if you are not connected to the Internet, the installer will delay for about 30 seconds while attempting to connect).

(Step 2) Connect your AR-8MF Relay Interface to any available USB port on your computer using a CC-USBB cable (1 to 15 foot). A high percentage of systems will be up to date and you will not see any activity or a pop-up message (allow up to 30 seconds for any system message). If your USB Com driver is out of date, you may receive a message that your system is being updated or a new driver is being installed. Allow the update to occur before you move to the next step. If you do not see activity or receive a system message, proceed to step 3.

(Step 3) Insert the installation CD or USB flash drive and wait for the security message (with a USB flash drive, you may need to browse to the drive icon from your My Computer link). OK or click the startup.exe file to start the installer dialog.

(Step 4) Check your USB Com driver by clicking on the "Open Device Manager" button in the installer dialog window and expanding the "Ports (COM & LPT)" category (expand the category by clicking on the + or arrow, see Device



Manager on page 4 or go directly to Device Manager from Control Panel). If you see a "Prolific USB-to-Serial Comm Port" entry, this is your USB Com driver* and the com port assigned is to the right of the entry. Right click on the entry and select "Properties" and click the "Driver" tab. Your USB Com driver must be Prolific version 3.4.62.293 or higher (dated 10/17/2013 or later). If your USB Com driver is not up to date, right click on the entry and select "Update Driver Software". If your USB Com driver is up to date then please note the Com port number assigned and jump to step 5.

*verify that this is the com port assigned to the AR-8MF by unplugging the AR-8MF from your USB port and watching the entry in device manager. The entry should disappear and then reappear when you plug the AR-8MF back in.

If you do not have an Internet connection or are having problems with the USB Com driver installation, disconnect the AR-8MF USB cable from your computer and install the USB Com driver from your CD by clicking on the "Install USB Com Driver" button. Please note that you may have to remove any out of date Prolific Com drivers on your system before the current driver will install correctly. It is important that you use the remove feature on your CD (not the remove feature in Device Manager). The remove feature is shown after clicking the "Install USB Com Driver" button from the installer dialog window (allow up to 30 seconds for the installer to load and appear).

(Step 5) After you have verified or installed the up to date USB Com driver, reconnect (if not already connected*) your AR-8MF Relay Interface to the same USB port and install the AR-8MF device driver** by clicking the "Install EECI Device Driver" button from the installer dialog window (if you have auto start disabled, you may browse to the Windows Driver folder and double click on setup.exe). A desktop icon for the AR-8MF will be created. When installing the AR-8MF device driver on a Windows XP or Vista computer, double click on setup.exe in the XP-Vista folder. *if you reconnect your AR-8MF to a different USB port, a different com port may be assigned.

**Please note that the Microsoft .Net Framework must be installed on your system. The .Net Framework is already installed if you have Windows 7 or higher. If the .Net Framework is not installed on your computer, the installation program will attempt to download and install the .Net Framework from the Microsoft Update website through your internet connection. This may take 5 minutes or longer. In order for the .Net Framework to install correctly, your computer must be up to date with Windows Update. This is especially important with Windows XP* and Vista. You may update your computer by clicking on the start button, All Programs, Windows Update and clicking on "Check for updates". *for XP, Service Pack 3 must be installed.

(Step 6) After the AR-8MF device driver is installed, the AR-8MF com port should be detected and a pop-up will prompt you for the com port to be used with your AR-8MF Relay Interface (correct com port should be shown). You may edit the com port if incorrect. The AR-8MF User Interface will now open and the label just under the COM port indicator should show that Com port open. Click the "Install Help Files" button to install important trouble-shooting and reference information before you close the installer.

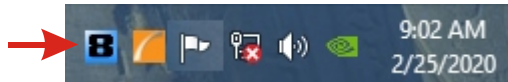
(Step 7) Test your relays by clicking the relay buttons for each relay. The relay should energize when the button is red and de-energize when the button is green.

(Step 8) You may set your AR-8MF Relay Interface to input mode by reversing the opto isolators* on the circuit board as shown on page 2 and connecting the RCT-8 terminal block to port A on your AR-8MF Relay Interface (unplug relay card).

*Note: when using the dual I/O mode, the opto isolators should be left in the relay mode (dual mode port required).

(Step 9) Test your inputs by clicking the Setup button on the AR-8MF User Interface and then checking all 8 input boxes. Click apply and then click OK. The indicator box to the right of the relay button will show a zero when no voltage is applied to the input terminal on the RCT-8 and a one when voltage is applied to the input terminal. Terminal 10 on the RCT-8 is the common (- or +) for all eight inputs. The default voltage input range for the AR-8MF is 3.3V to 18 volts (DC or AC). See page 6 for RCT-8 terminal assignments.

Click the "Tray" button to place the User Interface in "driver only" mode. You will see a blue 8 icon in your system tray by the clock (bottom right of screen as shown below).



Click the blue 8 icon to re-open the AR-8MF User Interface. Click the "Unload Device Driver" to stop the AR-8MF device driver. Please note that by default, the AR-8MF device driver is only loaded on demand to conserve system resources. To re-start the AR-8MF device driver, double click the red and blue AR-8MF desktop icon or under Applications.

HOW TO OPEN DEVICE MANAGER

Windows XP, VISTA or Windows 7

Click the Start Button (lower left of screen), then Control Panel (right side). With the view set to classic view, small or large icons, click (or double click) the Device Manager icon. With Windows XP you will need to click the System icon (in Control Panel) then the Hardware Tab then the Device Manager button. You may also use the supplied CD to open Device Manager by clicking the "Open Device Manager" button when the CD auto starts.

Windows 8.1, 10 and Windows Server

Move your mouse cursor to the lower right side of your screen and click on Settings. Click on Control Panel near the top and click on the Device Manager icon.

TROUBLE-SHOOTING THE AR-8MF

(1) Verify that your USB com driver is installed by going to Device Manager and checking for the Prolific USB to Serial Comm Port entry. Right click on the entry, then Properties, select the Driver tab and verify that the driver is dated 8/15/2014 or later. If the driver is out of date, connect to the Internet and click the Update Driver button. Please note that an out of date driver may allow the AR-8MF to partially function and/or with erratic operation.

(2) Verify that the Prolific USB to Serial Comm Port entry is the com port used by your AR-8MF. You may do this by watching the entry in Device Manager and unplugging your AR-8MF from your computer USB port. The entry should disappear and then re-appear when you plug the AR-8MF back in to your computer USB port.

(3) Verify that the relay card that you are using has 5V relay coils (shown on top of each relay) when powering from USB. Verify that you are supplying 12VDC to the relay card when the relay card is connected via ribbon cable (relays will show 12VDC on top). A multi-meter may be used to measure the voltage and for the correct polarity.

(4) Try replacing the USB cable and/or using a different USB port.

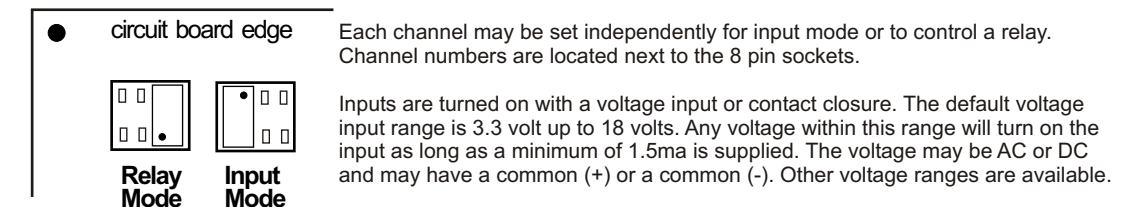
(5) Verify that the AR-8MF device driver is correctly installed and loaded. Click the blue 8 icon in your system tray (bottom right) and check for the correct com port setting (should show the correct com port open). If the window below the COM indicator shows "COM Not Found!" then a com port issue is the problem (check for another program that may be using the com port). You may right click the taskbar at the bottom of your screen, then Task Manager to view running applications.

(6) Remove the AR-8MF USB cable from your computer, wait 5 seconds and plug back in. Open the AR-8MF User Interface by clicking on the blue 8 icon in your system tray and double click on the blue EECI logo to reset the com port. You should see a reset message followed by a COM open indication. Click Setup and uncheck "Allow External Commands". If this corrects the issue that you are experiencing then an external application is the problem.

IMPORTANT PRECAUTION: To prevent possible interference with USB communication, keep all relay or contactors at least 36" away from the unshielded circuit board of your USB product.

Arcing across relay contacts can generate enough RF to disrupt the USB data stream which will require a manual reset of the com port. You may reset your USB product by double clicking on the EECI logo or unloading and restarting the device driver.

USING THE AR-8MF INPUT MODE

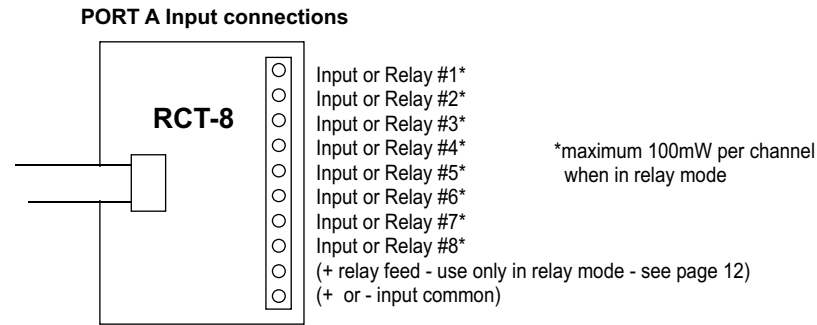


A channel is set to relay/output mode by placing the opto coupler on the right side of the 8 pin socket with the dot on the opto coupler away from the edge of the circuit board (as shown above).

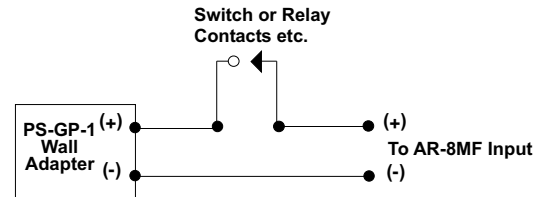
A channel is set to input mode by placing the opto coupler on the left side of the 8 pin socket with the dot on the opto coupler closest to the circuit board edge.

When using the dual I/O mode, all opto couplers should be left in the relay mode position (output).

USING THE AR-8MF INPUT MODE (continued)



The PS-GP-1 wall adapter (or other power source) may be used to monitor for a contact closure (shown below). The 5 volt USB power feed on the Aux Port may also be used, but it is best to maintain electrical isolation from the USB port to protect your computer and the AR-8MF.



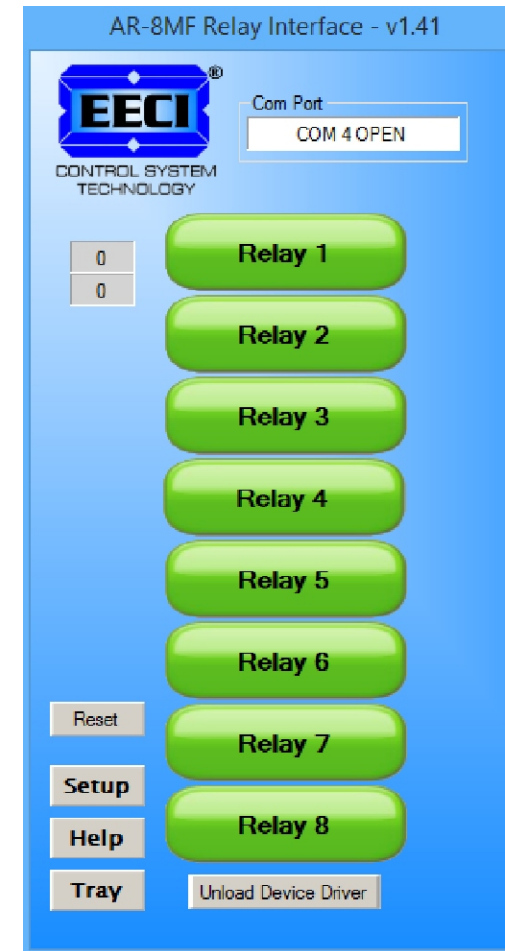
USING THE OPTIONAL AR-8MF DUAL I/O MODE

The dual I/O port permits the AR-8M to be switched back and forth from relay mode to input mode from software. This switching can occur at a very high rate if needed for I/O devices. The inputs are no longer connected via Port A so that relays or outputs may remain connected to the Port. Inputs are connected to the 10 pin header in the middle (between Port A and the Aux Port). An auxiliary card with opto isolators and a 10 position terminal block is attached to the 10 pin header to allow the inputs to be connected.

The dual I/O port is useful in security applications where a manual door opener device is used to unlock a door (by energizing an AR-8MF relay) while at the same time logging the event using the same AR-8MF channel switched to input mode (or other types of scenarios). Please contact EECl technical support for more information.

USING THE AR-8MF OUTPUT MODE

The AR-8MF outputs have a photo transistor output that is capable of directly driving LEDs, solid state relays, small reed relays and other devices that require 100mW or less of power to operate (use the RCT-8 terminal block to connect, see page 12). The maximum voltage that may be applied to pin 9 on Port A is 48 volts DC. The maximum allowed current through the photo transistor must be limited to 20ma at 5 volt, 10ma at 10 volts, 5ma at 20 volts and lower at higher voltages (ratio metrically). A variety of relay cards and relays are available for connection to the AR-8MF outputs. The RYD-8 driver card may be used to directly power devices that require more than the 100mW that the photo transistors allow. The RYD-8 may be used to control large power relays, contactors or other devices that draw up to 3 amps or less. See page 2 or 5 for the opto isolator position for output (relay mode).



THE AR-8MF USER INTERFACE

The AR-8MF User Interface allows you to set all of the basic operating characteristics of the hardware and permits the AR-8MF to send and receive data from other Windows applications or programs that you create.

When the User interface is started for the first time you are prompted for the com port that is to be used with the AR-8MF. This com port number is saved in the settings file "ar8mf-set.ini" which is created in the folder c:\eecl\ar-8mf. The driver will then load using the com port assigned. The com port indicator should have a "COM Open" message as shown to the left with the correct com port shown. The com port may be changed by clicking the Setup button and changing the com number in the Com Port window and then clicking Apply.

You can manually set the state of the relays by clicking on the relay buttons. The button will turn red when the relay is energized and will turn green when the relay is de-energized. Clicking a relay button with that channel set to input mode will turn off input mode and force that channel into relay mode. The button names may be changed using Setup. The two boxes below the com indicator show the outgoing relay control byte for use with external Windows applications. The box on the top shows the control byte for relays 1 thru 8 and the box on the bottom shows the control byte for inputs 1 thru 8 enable.

Clicking the Setup button allows you to set the input enable for each of the 8 channels. Checking the box for an input sets that channel to input mode (opto isolator must be in the input position if the dual I/O port is not in use - see page 2 and 5). The com port, baud rate and sampling rate settings are changed below. Un-checking the Allow External Commands box will prevent other Windows applications from sending or receiving data from the AR-8MF. A password protected version of the AR-8MF User Interface is available. Please contact technical support for more info.

The AR-8MF User Interface may be started in driver only mode by checking the Start Minimized box if the AR-8MF12 will always be connected. Any changes made to Setup will not take effect until you click the Apply button. Clicking the Apply button saves the new settings to the ar8mf-set.ini file so that if the device driver is unloaded, it will restart with the new settings. Click the Tray button (driver only mode) to close the window after the AR-8MF User Interface is set-up for your application. A blue 8 icon will appear in your system tray (click to re-open the user interface). The AR-8MF User Interface may be left open if an external application is not used. The AR-8MF User Interface may be completely shut down (and driver unloaded) by clicking the "Unload Device Driver" button. Once shut down, you will need to double click the AR-8MF desktop icon to re-start the AR-8MF Driver (or clicking the AR-8MF icon under All Programs in the EECl folder). The Help button will provide additional assistance if you installed the Help files from the AR-8MF installation CD.

USE OF THE AR-8MF WITHOUT THE MICROSOFT .NET FRAMEWORK

Inputs 6, 7 and 8 will function without the installation of the .Net Framework or device driver, allowing the use of 3 inputs with older operating systems. The inputs may be used by reading the status of DCD, DSR and CTS. The inputs may be tested by installing the universal AR-2 test program from the EECl support web page (file ar2n.zip). The source code examples for the AR-2S may be used to read the status of DCD, DSR and CTS.

AUTO START-UP FOR THE AR-8MF DEVICE DRIVER

By default, the AR-8MF device driver is only loaded on demand to conserve system resources. You may install the AR-8MF device driver permanently by checking the "Driver Only" check box under Setup in the AR-8MF User Interface. The "Driver Only" check box should not be checked unless the AR-8MF is always connected. You will then always see the AR-8MF system icon in your system tray* along with the other system devices (such as your speaker, printer or display adapter). Click the blue 8 icon in your system tray to open the AR-8MF User Interface. If the AR-8MF device driver is not installed permanently, you will need to double click the AR-8MF desktop icon to load the AR-8MF device driver each time your system starts.

*you may need to expand the arrow in your system tray to see all the icons (the tray is the row of icons on the lower right of your screen, next to your clock).

AR-8MF CONTROL SOFTWARE

External software control is utilized with just 3 bytes to send and receive data to and from the AR-8MF. One byte is used for relay control, one byte is used for input enable control and one byte is used for monitoring inputs. Shown below is a description of these control bytes:

RELAY BYTE: **00110101** controls Relays 1 thru 8

bit 7
bit 0
relay 8
relay 1

The above byte shows relays 1, 3, 5 and 6 energized with a decimal equivalent of 53. To energize all 8 relays, set all bits to 1 (decimal equivalent of 255). To de-energize all 8 relays, set all bits to 0 (decimal equivalent 0).

INPUT ENABLE BYTE: **11000100** sets channels 1 thru 8 to Input Mode

The above byte shows inputs 3, 7 and 8 enabled with a decimal equivalent of 196.

INPUT BYTE: **00110001** provides state of Inputs 1 thru 8

The above byte shows inputs 1, 5 and 6 turned on (decimal equivalent 49).

The AR-8MF relays are controlled by sending the Relay Control Byte to the AR-8MF.

The AR-8MF channels are switched to Input Mode or Relay Mode by sending the Input Enable Byte to the AR-8MF.

These 2 control bytes (Relay and Input Enable) may be sent one at a time or both and in any sequence.

The state of the AR-8MF inputs are determined by reading the Input Byte. Bits set high indicate that the input is on.

The update rate of the relay/outputs and/or inputs are set in the AR-8MF by clicking the Setup button, entering the Sample Rate and clicking Apply. The default rate is 200ms (5 times per second). The Allow External Commands box in Setup must be checked in order for external applications to interact with the AR-8MF.

Shown on the following page are several examples for use with the Microsoft .Net Framework. These examples will run in all versions of Visual Studio including Visual Studio Express. The supplied AR-8MF software example is most widely used with Microsoft Visual Studio and the programming languages Visual Basic, Visual C#, Visual C++ and ASP.Net which are the source codes that the AR-8MF has been developed around. Please contact EEC1 technical support for more information.

SIMPLE PROGRAMING EXAMPLE IN MICROSOFT VISUAL BASIC .NET

AR-8MF Relay Control Example

To use this example in Visual Basic, copy the code module (supplied on your CD) to a sub called setRelay(). From the toolbox drag two buttons and a textbox to your form. Insert the following code into the button click subs. One button will energize the relay number that you enter into the textbox. The other button will de-energize the relay.

```
Private Sub Button1_Click(sender As Object, e As EventArgs) Handles Button1.Click
    relay = Int(Val(TextBox1.Text)) 'set variable relay to an integer 1 to 8
    If relay > 0 And relay < 9 Then setRelay() 'set AR-8MF relay - energize relay
End Sub
```

```
Private Sub Button2_Click(sender As Object, e As EventArgs) Handles Button2.Click
    relay = Int(Val(TextBox1.Text)) + 8 'set variable relay to an integer 9 to 16
    If relay > 8 And relay < 17 Then setRelay() 'set AR-8MF relay - de-energize relay
End Sub
```

AR-8MF Input example

To use this example in Visual Basic, copy the code module (supplied on your CD) to a sub called readInputs(). From the toolbox, drag (8) labels and a timer control to your form. Insert the following code into the timer sub. The state of the (8) AR-8MF inputs are displayed in labels 1 through 8.

```
Private Sub Timer1_Tick(sender As Object, e As EventArgs) Handles Timer1.Tick
    readInputs() 'collect inputs status

    If inputs <> inputByte(0) Then 'have inputs changed?
        Z = 1 'select bit 0 (first byte)
        For W = 1 To 8
            B = inputByte(0) And Z 'check bit
            If B > 0 Then MyLabelArray(W).Text = "1" Else MyLabelArray(W).Text = "0" 'bit set?
            Z = Z * 2 'advance to next bit
        Next W
        inputs = inputByte(0) 'input states 1 to 8 are stored in inputByte(0)
    End If
End Sub
```

THE AR-8MF DATA LOGGER

The AR-8MF User Interface provides a data logger function that will save digital input readings to a file at preset time intervals. Label and event values may be factored into the recorded data event along with time and date by entering the desired values at the setup screen by clicking the Event Setup button. The AR-8MF data logger may be used stand alone if an external application is not used. The file output format may be set to plain text, CSV or text delimited formats and may be imported into database or spreadsheet applications if required. The data log interval may be set to seconds or minutes by clicking the button to the right of the setting. A suffix may be added to the logged value (such as Open, Closed, On, Ready, Malfunction, etc.). Extended ASCII characters may be added by holding down the alt key and entering the ASCII code on your keyboard keypad. Example: to display a degree symbol, hold down the alt key and enter 248 on your keypad. The ON/OFF setting allows you to log your data event based on the on/off state of the input.

SIMPLE PROGRAMING EXAMPLE IN MICROSOFT C# .NET

AR-8MF Relay Control Example

To use this example in Visual C#, copy the code module (supplied on your CD) to a sub called set_relay(). From the toolbox drag two buttons and a textbox to your form. Insert the following code into the button click subs. One button will energize the relay number that you enter into the textbox. The other button will de-energize the relay.

```
private void button1_Click(object sender, EventArgs e)
{
    relayNumber = Convert.ToInt32(textBox1.Text);
    relayByte = relayByte | 1 << relayNumber-1;    //set relay bit
    set_relay();                                //energize relay
}

private void button2_Click(object sender, EventArgs e)
{
    relayNumber = Convert.ToInt32(textBox1.Text);
    relayByte = relayByte &= ~(1 << relayNumber-1); //clear relay bit
    set_relay();                                //de-energize relay
}
```

AR-8MF Input example

To use this example in Visual C#, copy the code module (supplied on your CD) to a sub called read_inputs(). From the toolbox, drag (8) labels and a timer control to your form. Insert the following code into the timer sub. The state of the (8) AR-8MF inputs are displayed in labels 1 through 8.

```
private void timer1_Tick(object sender, EventArgs e)
{
    read_inputs();    //collect the status of inputs from the AR-8MF

    bitOfByte = 0;    //set to input 1
    check_bit();    //determine if input bit is set
    if (bit == true){
        label1.Text = "1";    //display input state
    }
    else {
        label1.Text = "0";
    }

    bitOfByte = 1;    //set to input 2
    check_bit();
    if (bit == true)
    {
        label2.Text = "1";
    }
    else
    {
        label2.Text = "0";
    }
}

private void check_bit()
{
    bit = (inputByte[0] & (1 << bitOfByte)) != 0; //determine if bit is set - bit 0 to 7 - result bool
}
```

RELAY RESPONSE SPEED

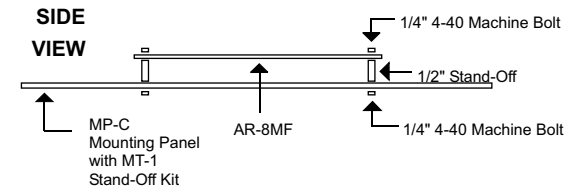
The speed at which the relays respond to a software command is directly related the baud rate setting of the AR-8MF and the sample rate set in the AR-8MF user interface. The higher the baud rate setting, the faster a relay (or group of relays) will respond to software transmissions. The default setting of 115,200 baud will allow your software to energize and de-energize groups of relays almost instantly when the sample rate is set to 5 ms (located in the AR-8MF Settings dialog).

START-UP RELAY STATE

When the AR-8MF is first powered, the relays which are connected will normally power-up in a de-energised state. It is possible under certain conditions (such as fluctuating power) that the relays may power-up in a random state (several relays may energize, while others may not). Your program should reset all the relays to a known state when your program is first started.

MOUNTING

The AR-8MF Mult-Function Relay Interface card may be mounted in an enclosure or on a metal mounting panel using the MT-1 stand-off mounting hardware as shown below. The AR-8MF will attach to the 4 stand-off spacers using 4-40 machine screws (4 mounting holes are provided on the AR-8MF). Contact technical support for more information on mounting panels and various mounting layouts.

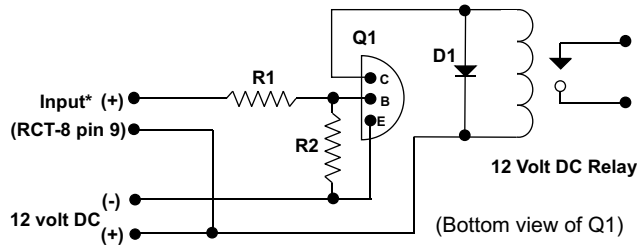


UPDATES FOR THE AR-8MF DEVICE DRIVER/USER INTERFACE

Click the "Check for Updates" button under Setup in the AR-8MF User Interface or contact EECl support. There is no charge for the updates.

RELAY INTERFACING

In the event that you wish to use existing control relays with the AR-8MF, you may use the RYD-8 relay driver card or construct a relay driver circuit as shown below. The voltage and current output of the relay output port is too low for most relays (with the exception of some types of solid state relays and reed relays). We recommend the use of the following circuit to drive most types of mechanical and reed relays with 12 volt DC coils (200 MA maximum).

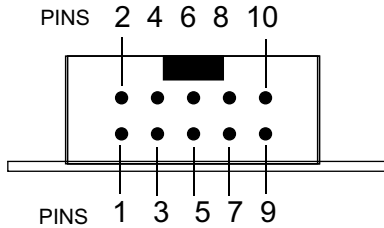


PARTS LIST

- (Q1) NPN Transistor...MPS6560 or (Radio Shack 276-2009)
- (D1) Diode.....1N4148 or (Radio Shack 276-1122)
- (R1, R2) Resistor.....3K, 33K (Radio Shack 271-1328, 1341)
- (Relay) Radio Shack 275-214, 275-206, 275-233 or equivalent

*connect to opto isolator output from the AR-8MF using the RCT-8 (pin 9 is common)

PORT A HEADER CONNECTOR PIN-OUT



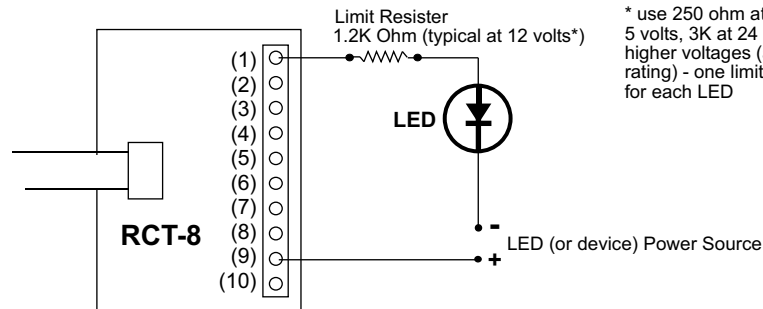
HEADER PIN-OUT FOR PORT A ON THE AR-8MF

NOTE: Key notch is on top. View is looking into header pins.

PIN CONNECTIONS

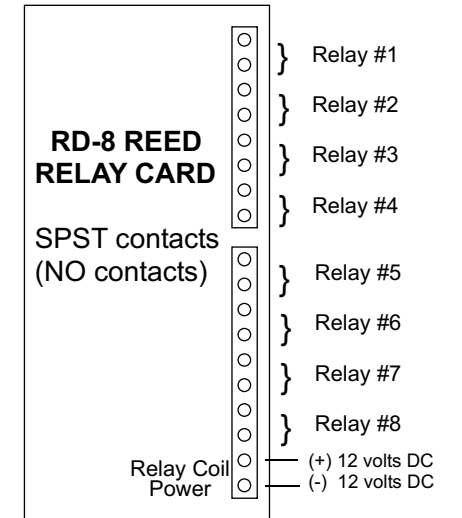
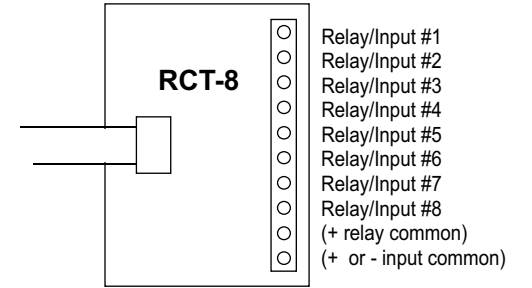
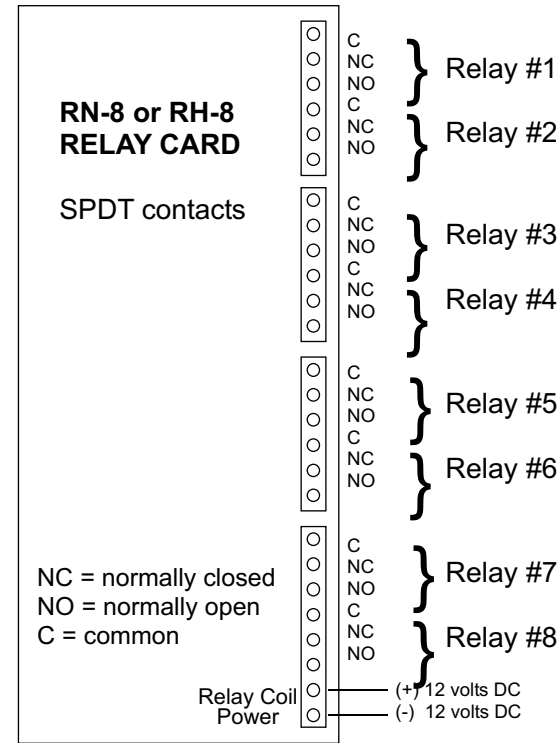
- (1) Relay #1 or Input #1
- (2) Relay #2 or Input #2
- (3) Relay #3 or Input #3
- (4) Relay #4 or Input #4
- (5) Relay #5 or Input #5
- (6) Relay #6 or Input #6
- (7) Relay #7 or Input #7
- (8) Relay #8 or Input #8
- (9) Opto (+) (used for relay control only)
- (10) Signal Common (used for inputs only)

CONNECTION TO AN LED OR EXTERNAL DEVICE (100mW max)



* use 250 ohm at 3.3 volts, 330 ohm at 5 volts, 3K at 24 volts or adjust for higher voltages (and resistor power rating) - one limit resistor is required for each LED

CONNECTION DIAGRAMS FOR RELAY CARDS AND RCT-8



SPECIFICATIONS RH-8 RELAY CARD

- Size..... 2.75" by 6"
- Weight..... 8 ounces
- Number of Relays..... 8
- Contact rating (AC)..... 12 amp 250 VAC*
- Contact rating (tungsten)..... 3 amp 360 watt
- Contact rating (DC)..... 12 amp 24 VDC
- Contact rating (horsepower)... 1/3 HP 240 VAC
- Contacts..... SPDT
- Power requirements..... 12 volts DC 500ma
- Terminal block rating..... 125 volts
- Optional heavy duty block..... 250 volts

SPECIFICATIONS RD-8 REED RELAY CARD

- Size..... 2.25" by 4.875"
- Weight..... 3.5 ounces
- Number of relays..... 8
- Contact rating (DC)..... 10 VA 200 VDC*
- Contact rating (AC)..... 10 VA 200 V peak*
- Max switching current..... 1/2 amp
- Contacts..... SPST
- Power requirements..... 12 Volts DC 200ma
- Terminal block rating..... 125 volts
- Optional heavy duty block..... 200 volts
- * resistive

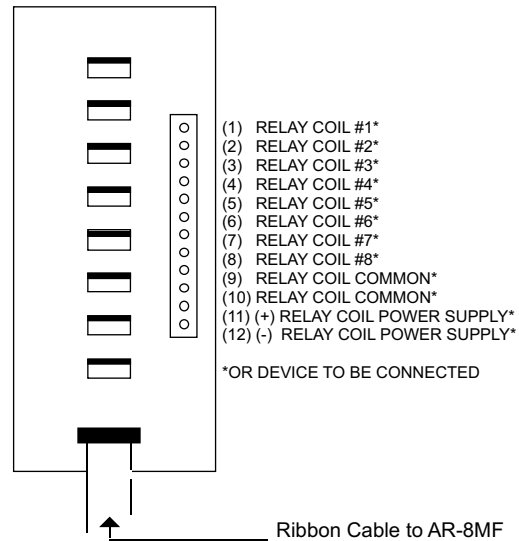
CONNECTION OF THE RYD-8 TO THE AR-8MF

SPECIFICATIONS RYD-8 RELAY DRIVER CARD

Size..... 2.25" by 4.875"
 Weight..... 2.5 ounces
 Relay Outputs..... 8
 Maximum current rating..... 3 amp (requires heat sinks above 1.5 amps)
 Input voltage range..... 5 to 48 volts DC (voltage must match relay coil requirement)

DESCRIPTION: The RYD-8 relay driver card provides (8) relay drivers for connection directly to relay coils, contactor coils or other devices (such as motors, lamps, solenoids, etc.). The ribbon cable provided with the RYD-8 will connect directly to a relay output port on the AR-8MF Interface which allows the RYD-8 relay driver to provide software control of the relay or device to be connected to the terminal block on the RYD-8. The RYD-8 relay driver card will power relays or other devices which require 3 amps or less and operate within the voltage range of 5 to 48 volts DC. The output voltage of the RYD-8 (for powering the relay coil or device) is equal to the RYD-8 power input which is applied to terminals (11) and (12) on the RYD-8 terminal block. All eight relay coils (or other devices which are connected to the RYD-8) must operate at the same voltage and must operate at the voltage that is applied to terminals (11) and (12) on the RYD-8 terminal block.

RYD-8 CONNECTION DIAGRAM



One side of the relay coil of each relay must be connected to one of the relay common terminals (two terminals are provided for all eight relays, terminal #9 and terminal #10).

ALL EIGHT RELAY COILS (or connected device) MUST OPERATE AT THE SAME VOLTAGE.

HEAT SINKS: Heat sinks should be installed on the power transistors on the RYD-8 relay driver card if the relay coil or the device to be connected requires more than 1.5 amps continuous (or 5 watts). A heat sink kit is available for this purpose (specify RYD-8 heat sink kit). Please contact technical support for additional information.

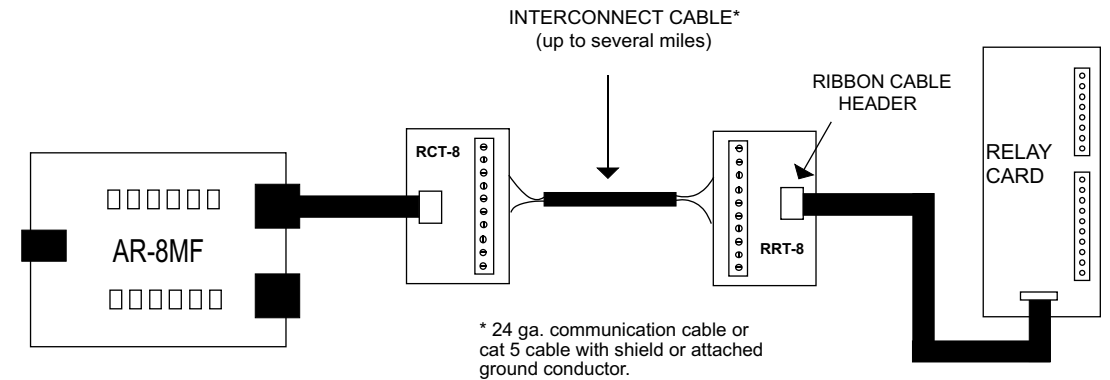
Relays or devices connected to the RYD-8 may be located up to several miles from the RYD-8. The only limiting factor is the voltage drop in the relay interconnect wire. A number of different types of relays with various contact configurations are available for connection to the RYD-8. Contact technical support for more information.

The ribbon cable on the RYD-8 may be connected to any of the relay output ports on the AR-8MF (in the same manner as the relay cards are connected).

REMOTE CONNECTION OF RELAY CARDS OR RELAY DRIVER CARDS

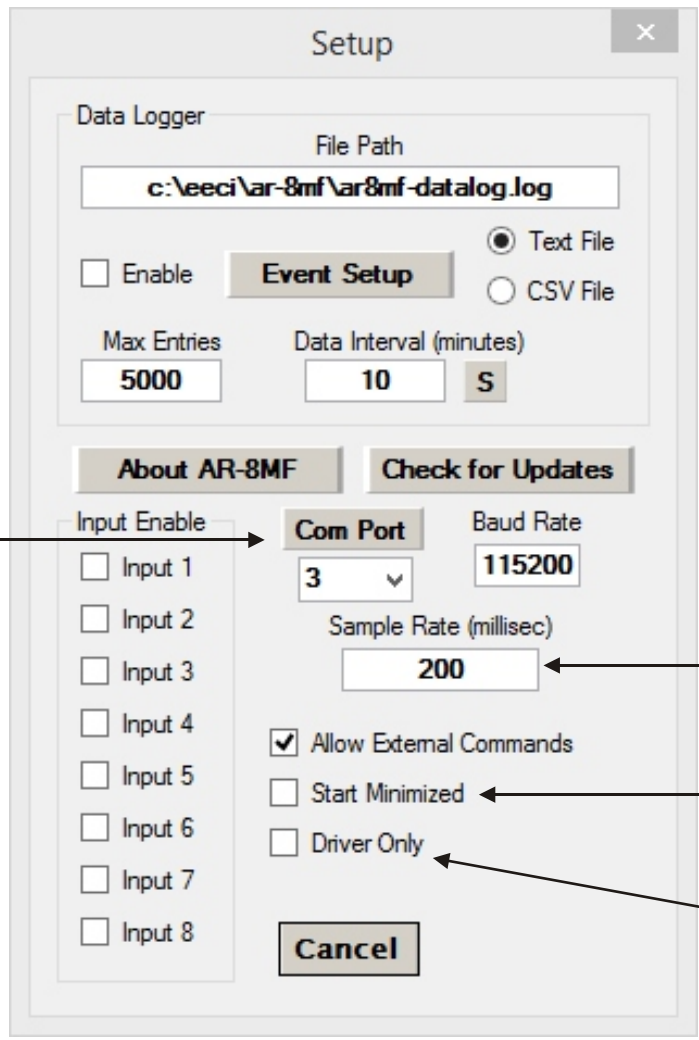
Relay cards may be located up to several miles away from the AR-8MF. Plug the RCT-8 or RCT-16 into Port A and/or Port B of the AR-8MF. The remote relay card may then be connected to the RCT-8 using low cost 24 gauge 6 pair communication cable, cat 5 network cable or other types of cable. The RCT-8, RCT-16 terminal blocks or RCP-8 (DB-9 connector) ribbon cable adapters should be used at the AR-8MF for connection to the interconnect cable (see illustration on page 17). Relay cards may be ordered with a header in place of the ribbon cable or the RRT-8 or RRT-16 terminal blocks may be used to make the connection to the interconnect cable. The relay card ribbon connector may be replaced with a DB-9 connector in place of the header for direct connection to the interconnect cable. All relay cards are available with header sockets, RJ-45 or DB-9 connectors installed in place of the ribbon connector (specify when ordering).

The following illustration shows how relay cards or relay driver cards may be connected to the AR-8MF. The relay card or relay driver card must be powered at the remote location.



WARRANTY AND CARE OF THE AR-8MF

The AR-8MF Relay Interface is warranted against factory defects for a period of 90 days from the date of purchase. The AR-8MF has proven to be extremely reliable in actual operation during field tests. We recommend that the AR-8MF and associated hardware be installed in a suitable enclosure (4 mounting holes are provided on the circuit board) and that reasonable precautions be taken to protect the circuit from static discharge. The most likely damage to occur is that caused by static discharge to the circuit board during handling.



Click to Refresh Com Ports (use the pull-down to select, then Apply to set)

Rate at which Inputs are Updated**

Load Driver Only and show Tray Icon when Driver Loads

Driver Auto Loads on System Start*

Start the data logger by checking the Enable box. The logger will roll-over or stop based on the setting in the Max Entries box. The Data Interval may be set to minutes or seconds and will log the data based on the setting in the box.

NOTE: Once a change is made, the Apply Button will appear. Changes will not be applied until you click the Apply button. The changes are saved to the ar8mf.ini file.

To completely automate the AR-8MF, check Start Minimized, Driver Only and Allow External Commands. In this mode of operation, your program has complete control of the AR-8MF and the User Interface does not open. *do not check unless the AR-8MF is always connected to a USB port.

**the default sample rate is 250ms (4 times per second). This is the rate at which all inputs are updated.



ELECTRONIC ENERGY CONTROL, INC.
 14960 Maple Ridge Rd
 Milford Center OH 43045-9016
 USA
 PHONE*..... (937) 349-6000
 ORDERS..... (800) 842-7714
 TECH SUPPORT... (937) 349-6000
 E-mail*..... cst@eeci.com
 Web*.....http://www.eeci.com
 *International & Domestic